

Case Study

Elevating Compliance and Retention at a Leading Children's Hospital



Overview

A leading children's hospital in the southwestern United States faced the challenge of maintaining compliance while enhancing employee retention for a workforce of over 9,000 licensed healthcare professionals.

To streamline processes and improve overall performance, the hospital turned to EverCheck by Propelus. By leveraging EverCheck's innovative solutions, the hospital has transformed its compliance practices, optimized workforce management, and set a new standard for healthcare excellence.



My biggest piece of advice I would give would be to spend the money and invest in the technology. Our investment into EverCheck has been a true game changer for us.

In no way could we ever monitor 9,000 active licenses in the way that EverCheck is able to do that. This has allowed us to get back to doing things that truly matter and really support the children at our hospital.

HR Supervisor, Employee Records

Challenge

Managing compliance at scale is no easy task, particularly for a multi-facility healthcare organization with thousands of licenses and certifications to track.

Beyond regulatory requirements, the hospital also needed to address the growing demand for a seamless employee experience to improve retention in a competitive job market.

The hospital sought a comprehensive solution to:

- Simplify and automate license and certification tracking.
- Ensure audit readiness across departments.
- Enhance employee onboarding and engagement.
- Use data-driven insights to support retention strategies.

The Propelus Solution: EverCheck

The children's hospital partnered with Propelus to implement EverCheck, a cutting-edge compliance management platform designed to reduce administrative burdens and improve organizational efficiency. Here's how EverCheck addressed their needs:

Automated Compliance Tracking

EverCheck provided real-time visibility into the status of thousands of licenses, certifications, and registrations, eliminating manual tracking errors and ensuring that compliance deadlines were met without added stress.

Proactive Audit Preparedness

With EverCheck's robust reporting capabilities, the hospital streamlined its preparation for audits, ensuring readiness for Joint Commission reviews. The platform's features supported mock surveys, allowing cross-functional teams to identify and resolve potential gaps before official inspections.



Actionable Workforce Insights

By integrating EverCheck data with its internal systems, the hospital used dashboards to monitor trends in staff turnover and identify opportunities to enhance employee satisfaction.

Seamless Onboarding Experience

EverCheck played a vital role in simplifying the onboarding process, ensuring that new hires were compliant from day one. This not only reduced time-to-productivity but also created a positive experience for new employees, contributing to long-term retention.

Key Takeaways for Healthcare Organizations

Streamlined Compliance Processes

With EverCheck, the hospital automated primary source verification and monitoring, significantly reducing administrative workload and improving accuracy. This efficiency allowed HR teams to focus on higher-value initiatives, enhancing overall productivity.

Improved Audit Outcomes

Regular mock surveys supported by EverCheck's reporting tools ensured that the hospital consistently met or exceeded audit standards. These proactive measures maintained the hospital's reputation for compliance excellence.

Enhanced Employee Retention

By simplifying compliance processes and improving onboarding experiences, the hospital created an environment where employees felt supported. These efforts contributed to a notable improvement in retention rates, particularly among hard-to-fill roles.

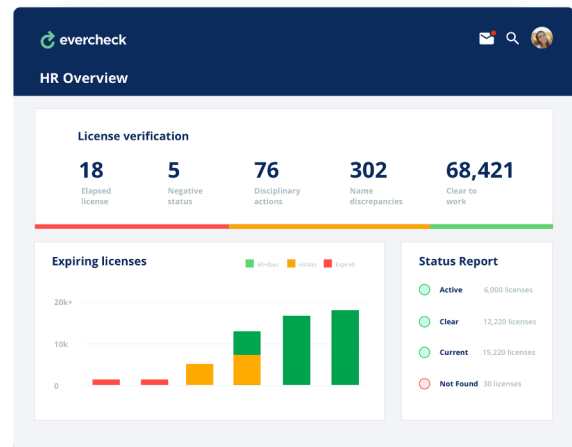
Recognition for Excellence

The hospital's adoption of EverCheck helped secure prestigious designations, such as Magnet Recognition, and strengthened its position as an employer of choice in the healthcare sector.

Why It Works

The hospital's success with EverCheck lies in the platform's ability to align compliance management with broader workforce goals.

The automation of complex processes reduces operational strain, while actionable insights empower leadership to make informed decisions that benefit both employees and patients.



The Results

- **Adopt Automation:** Tools like EverCheck eliminate manual errors, streamline compliance, and free up time for strategic HR initiatives.
- **Stay Audit-Ready:** Proactive measures supported by advanced technology ensure that organizations are always prepared for regulatory surveys.
- **Enhance the Employee Experience:** Simplifying compliance and onboarding processes fosters a supportive workplace culture, boosting retention.
- **Leverage Data for Decisions:** Actionable insights from tools like EverCheck can inform strategies to improve operational efficiencies while ensuring compliance.

Conclusion

By integrating Propelus's EverCheck platform into its operations, the leading children's hospital has set a new benchmark for compliance and workforce performance in the healthcare industry. The partnership has not only ensured regulatory compliance but also improved employee satisfaction and organizational efficiency.

Take the Next Step

Discover how Propelus and EverCheck can help your healthcare organization achieve compliance excellence while empowering your workforce.

Learn more about EverCheck at evercheck.com